

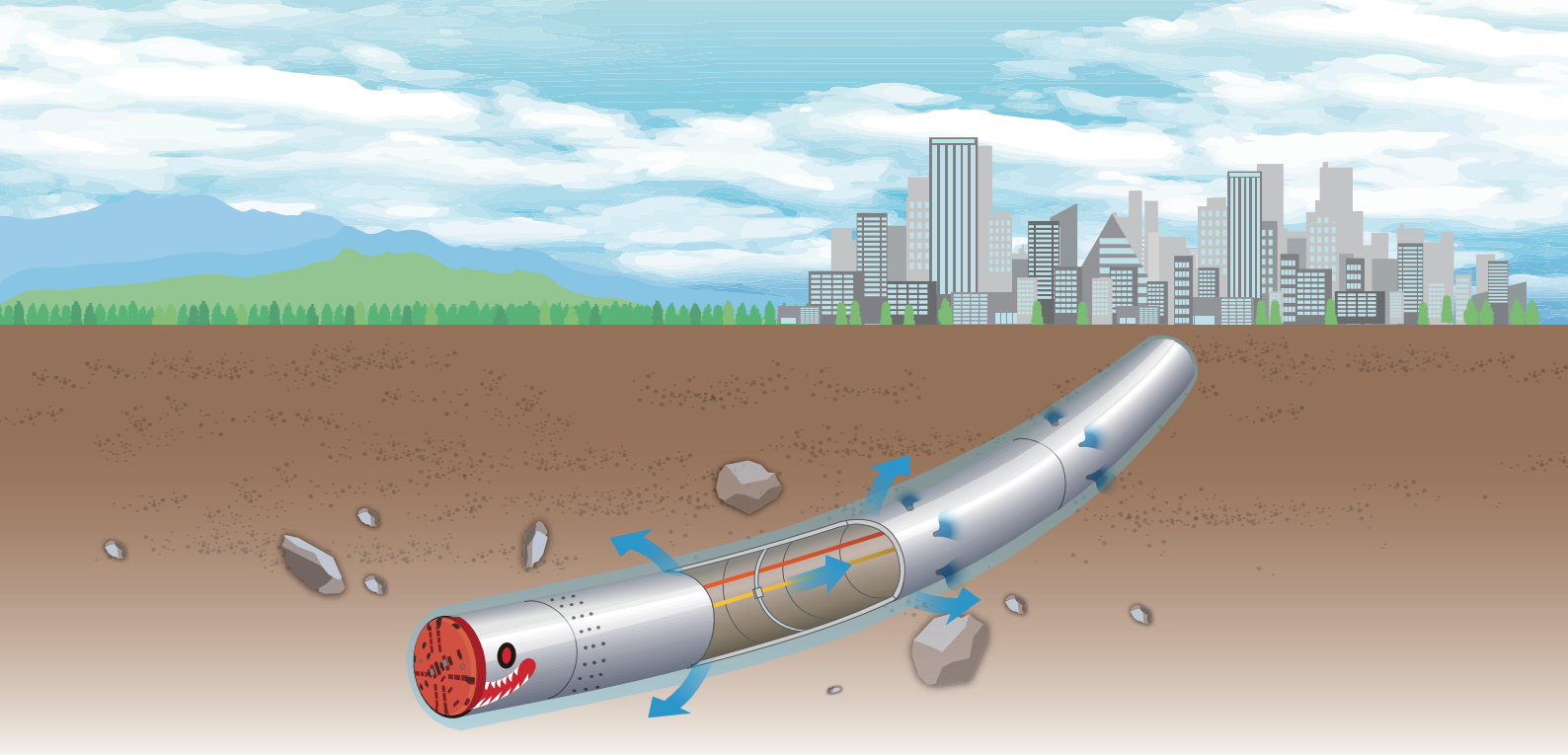


ISEKI
ISEKI POLY-TECH, INC.

LMS SYSTEM

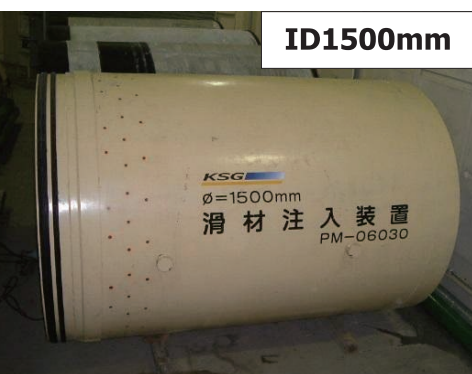
Lubricant Mix Soil System

AUTOMATIC LUBRICANT INJECTION EQUIPMENT

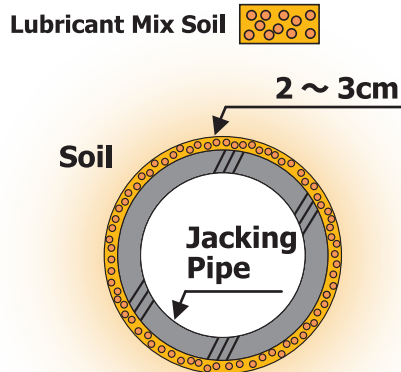


Fixed Type Lubricant Injection Equipment

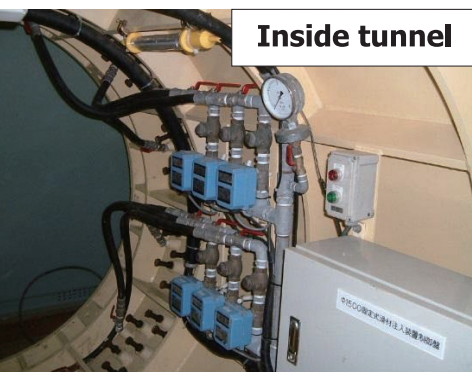
Intermediate Lubricant Injection Equipment



ID1500mm

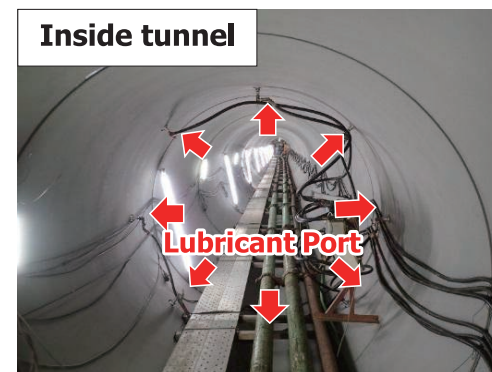


ID2600m



Inside tunnel

Inside diameter	Lubricant Port
Φ 800 ~ 1350mm	4
Φ 1500 ~ 2000mm	6
Φ 2200 ~ 2600mm	8
Φ 2800 ~ 3000mm	10



Inside tunnel

AUTOMATIC LUBRICANT INJECTION EQUIPMENT

Case Study

Long distance & Curving jacking method

Location : Japan,Aichi prefecture

Project owner : Aichi prefecture

Pipe : Φ 1350mm concrete pipe

Jacking length : L = 1,010.05m

Alignment : curving 270R~270R~130R~75R

Sloop + 0.6 ‰

Earth cover : 11.2~12.6m

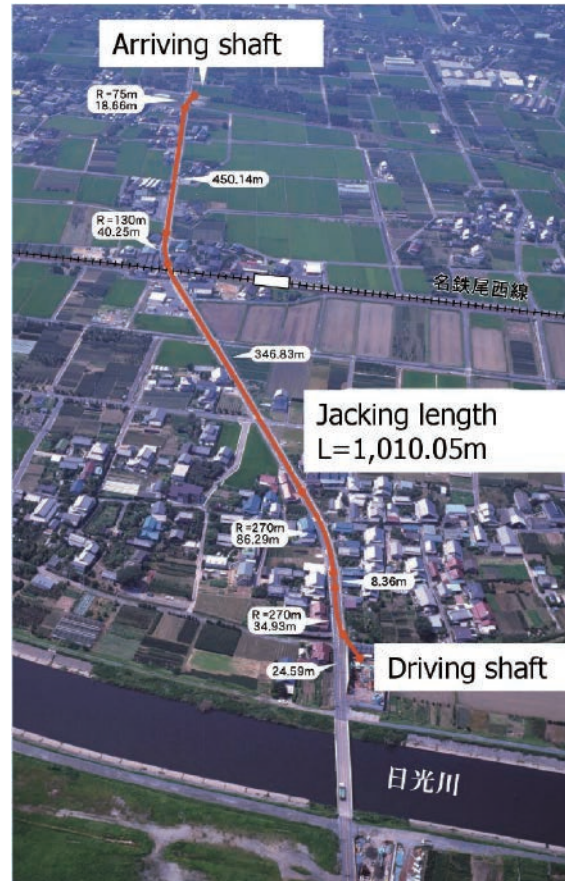
Water level : GL-1.2~2.0m

Soil condition : sand ~ Silty sand N=8~29

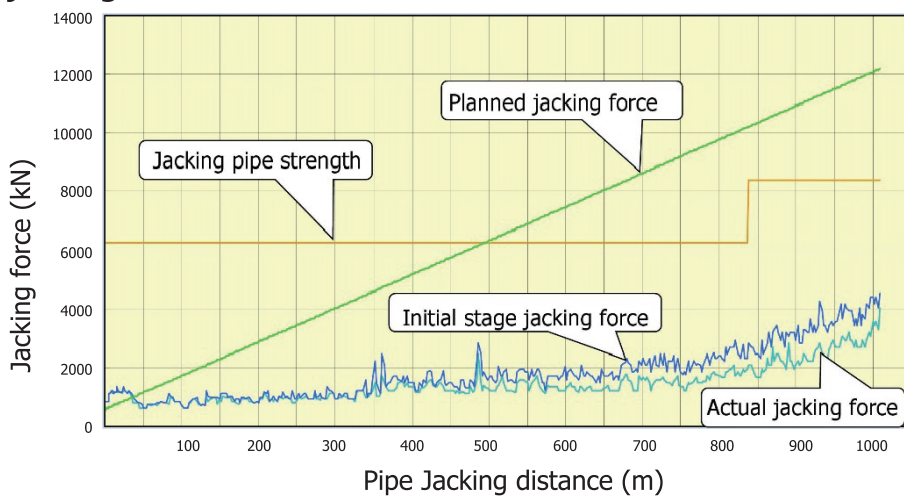
Method : Slurry type micro tunneling &

" LMS System "

Automatic lubricant injection system



Resultant jacking forces



Running Time : 60days (16hours day and night)

Daily advance : 16.8m

Planned jacking force : 12,182kN(1,243t) \Rightarrow Sureface Resistance $f = 2.0\text{kN/m}^2(0.20\text{t/m}^2)$

Actual jacking force : 4,533kN(462t) \Rightarrow Sureface Resistance $f = 0.9\text{kN/m}^2(0.09\text{t/m}^2)$



Design and manufactured by

ISEKI POLY-TECH, INC.

| Underground Services | E-mail : overseas@iseki-polytech.com |